



# LAMBERT

---



## Wood Furniture

Since the dawn of civilization, mankind has associated a sense of sheltering comfort and hominess with wood. Solid wood possesses the untamed, rugged dignity of a material that does not allow itself to be domesticated, for it could split or splinter anytime and anywhere, but that aspect of unpredictability inherent to nature and natural materials has once more become a much sought-after feature. Not long ago, man was aiming at eliminating any

process that could not be completely dominated by him. For instance, the only pieces of furniture supposed to look worn and aged were those bought from an antique dealer. But the artificial ageing of furniture done today offers us a ray of hope that the tyranny of categories has had its day.

Since the start of the 1980s Lambert offers a large variety of individual wood furniture (tables, chairs, occasional furniture etc.) consciously using highly expressive woods for their production, such as oak, bamboo, walnut, teak ... standing out for their conspicuous surface structures.

## Workmanship

Wood furniture by Lambert is made of solid wood almost exclusively. Here, there meet carpentry at its best and pure wood. The majority of the wood surfaces by Lambert are



treated with an oily glaze. Although oiled surfaces are a little more sensitive in the beginning, they will get more and more rugged with passing time thanks to regular care.

The treatment of the oiled Lambert furniture has the effect that it will change individually by its owner thus taking on a beautiful patina. Usually furniture provided with too much lacquer will lose its character and its lively appeal.



# LAMBERT

Lambert mainly uses the following woods for furniture and accessories of living:

**oak, oiled**



**oak, stained**



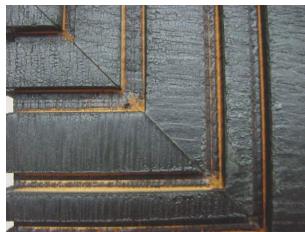
**bamboo / walnut**



**wild oak**



**oak, fire-treated**



**bamboo, steamed**



**bamboo, stained**



**mango wood, stained**



## Care

Wood is a natural material. Wood lives, warps and expands. Solid wood will always adapt to the humidity level of its surroundings. Tension, which can lead to splitting, may still occur if the indoor air is too dry. Central heating, underfloor heating and/or airtight PVC-windows make the water content in the wood decrease to far below 10%. Plants, humidifiers and simple water bowls will help.



# LAMBERT



## **Care instruction for oiled surfaces (care set 92.971)**

Polish the wood surface following the grain by means of a fine pad, remove the thereby arising dust and finally apply thinly the pure nut oil with the help of a cotton cloth. Allow the oil to be absorbed for some minutes, before you give the surface its final finish by polishing it once more.

## **Care instruction for stained and lacquer-finished surfaces (care set 92.972)**

Concerning the care of stained furniture by Lambert, it is absolutely sufficient to wipe it with a damp or dry cloth and to oil it from time to time. (Do not grind or rub stained or lacquer-finished surfaces!). Little uneven areas and scratches in dark wood can be touched up with the help of the joined brownish black repair pen.