



LAMBERT



Lacquer Furniture

Lacquer work has a long tradition in Asia. It was first practised in China over 4000 years ago. The craft was subsequently imitated in neighbouring countries, where simple objects of bamboo, rattan and wood, even horsehair, were coated with the thickened gum of the lacquer tree. This natural lacquer made them impermeable to water. Up to ten coats must be applied and polished. In 1968 Lambert encountered a lacquer enthusiast. He helped the Lambert company in its search for small workshops, thus supporting it in the

pursuit of its meanwhile lucrative venture: the temple table.

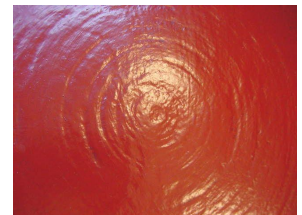
Temple tables (round & rectangular) have become a living part of collection history. Their "imperfect note" is the result of handcrafted surface treatment. Even today they are made by traditional methods of woven rattan and bamboo in northern Burma only. These tables are an



excellent manifestation of authentic individuality radiated by a one-off piece of furniture. Minute hairline cracks and craquelés are part of their natural appeal.

Those who appreciate traditional handicraft, will

turn a blind eye to dimensional variances.



Care

Lacquer furniture is, however, extremely sensitive to physical assaults, such as scouring agents or the sharp edges of a shoe. For cleaning we recommend to wipe off lacquer furniture with lukewarm water. A regular polish with beeswax will maintain the glossy finish.

Caution: hot objects in excess of 50°C will make the surface dull.